



GAT MONTHLY MEMBERSHIP PROGRESS REPORT

Results as of: 5/31/2022

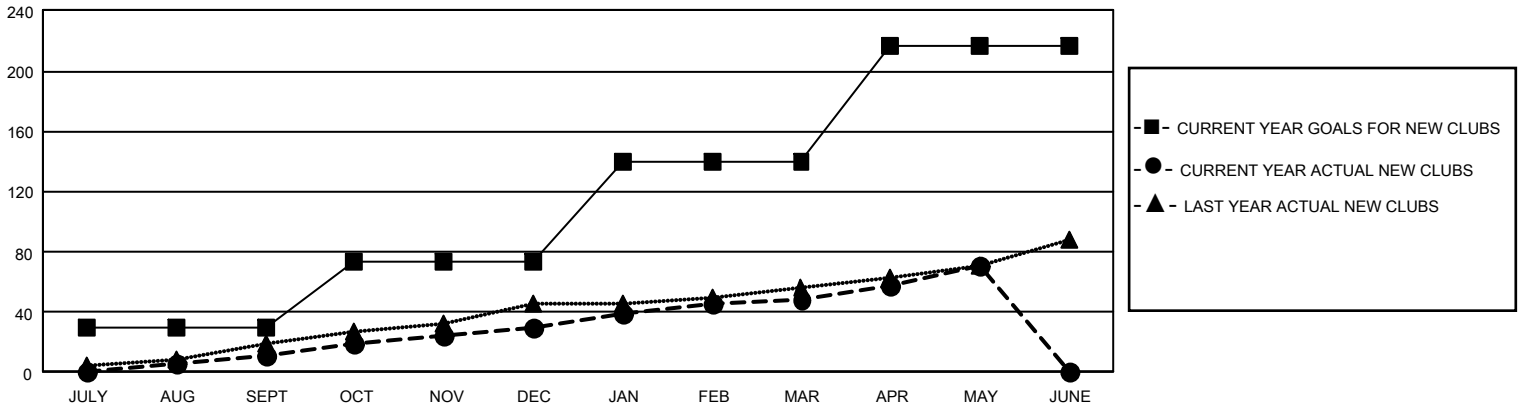
GAT Constitutional Area 4

REPORT DOES NOT INCLUDE CLUBS IN UNDISTRICTED AREAS.

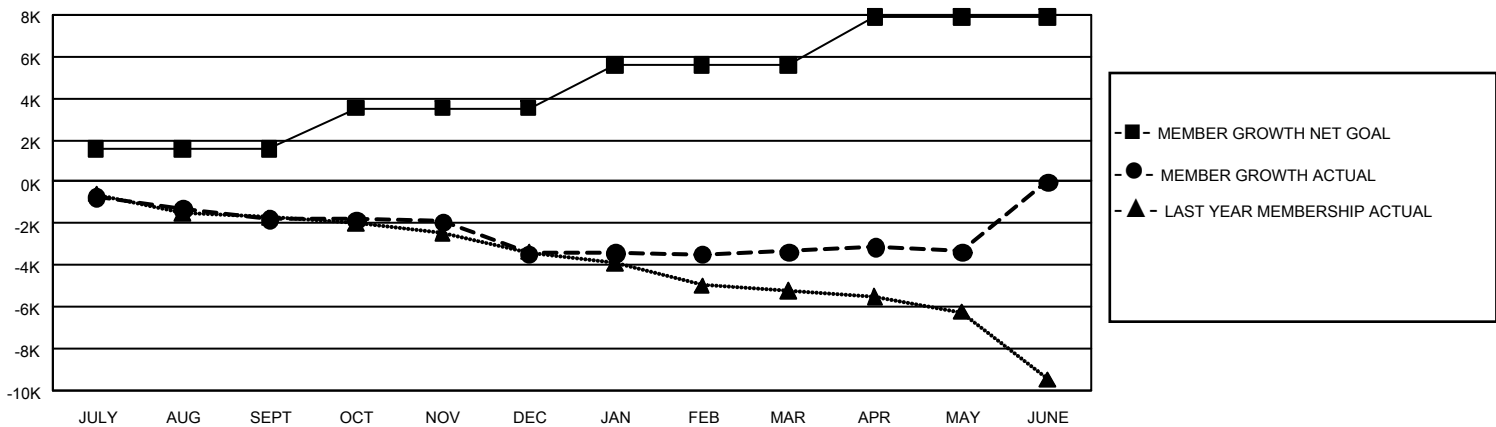
Clubs			
RESULTS FOR 2021-2022			
QUARTER	NEW CLUB GOAL	NEW CLUBS	DROPPED CLUBS
JULY/AUG/SEPT	90	11	76
OCT/NOV/DEC	129	19	51
JAN/FEB/MAR	201	18	28
APR/MAY/JUNE	228	23	14

Members			
RESULTS FOR 2021-2022			
QUARTER	MEMBER GROWTH NET GOAL	MEMBER GROWTH ACTUAL	DROPPED MEMBERS ACTUAL (including transfers)
JULY/AUG/SEPT	1596	2,460	3,837
OCT/NOV/DEC	1935	3,888	5,147
JAN/FEB/MAR	2081	4,220	3,689
APR/MAY/JUNE	2310	3,423	3,123

GOALS AND ACTUAL NEW CLUBS CUMULATIVE



GOALS AND ACTUAL MEMBERS CUMULATIVE



DROPPED CLUBS: 169	4,507 CLUBS OF 9,198 ADDED 1 OR MORE NEW MEMBERS	GENDER DISTRIBUTION
DROPPED MEMBERS	CLICK HERE FOR CUMULATIVE MEMBERSHIP DATA	MALE 172,198 (75.60%)
DECEASED 2,270		FEMALE 55,547 (24.39%)
CLUB CANCELLED 1,076		NON BINARY 1 (0.00%)
OTHER 12,454		PREFER NOT TO ANSWER 29 (0.01%)
TOTAL 15,800		TOTAL FAMILY UNIT MEMBERS 10,906
		FAMILY MEMBERS PAYING HALF DUES 5,641